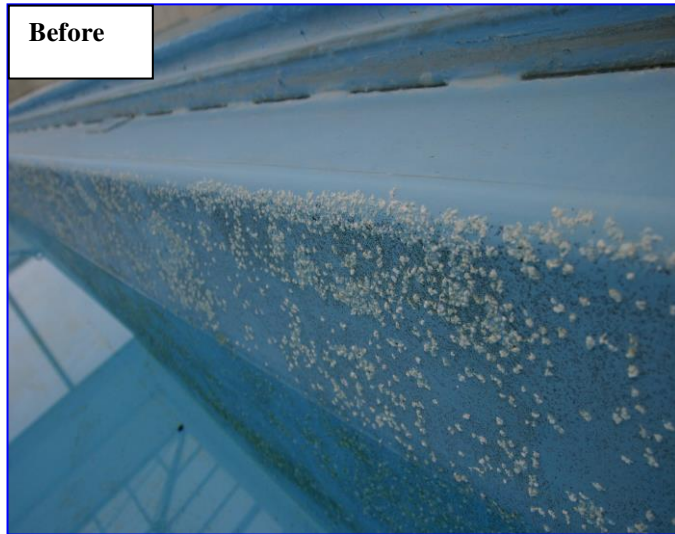


PROJECT HISTORY

METROPOLITAN CONDOMINIUMS

KANSAS CITY, MISSOURI

COMPLETION: 2007



PROJECT ASSESSMENT

“What needed to be done”

An indoor, sectionally fabricated aluminum pool that was plagued by unsightly deposits and surface discoloration throughout the pool surface. A by-product of aluminum corrosion, these white, crystalline, barnacle-type deposits were possibly an aluminum bromide chemical compound. Also evident on the surface was a large volume of ‘black pinholes’ that routinely appear when thick, high solids coatings are applied. With windows completely exposing the pool to UV rays from the sun, degradation and chalking of the existing pool coating left a film of residue rubbing off of the pool surface. No provisions were in place to protect dissimilar metals (S/S, aluminum, & galvanized steel) coming into contact with each other in this very active, electronic environment. Surface and fixture corrosion was extensive.

RENOVATION PLAN

“How it was done”

Being an indoor pool on the 14th floor made abrasive blasting somewhat impractical. Eventually, mechanical grinding was chosen to remove all the deposits and degraded coating from the pool surface and gutter channels. In an effort to rid the contact of dissimilar metals touching each other, corroded stainless steel

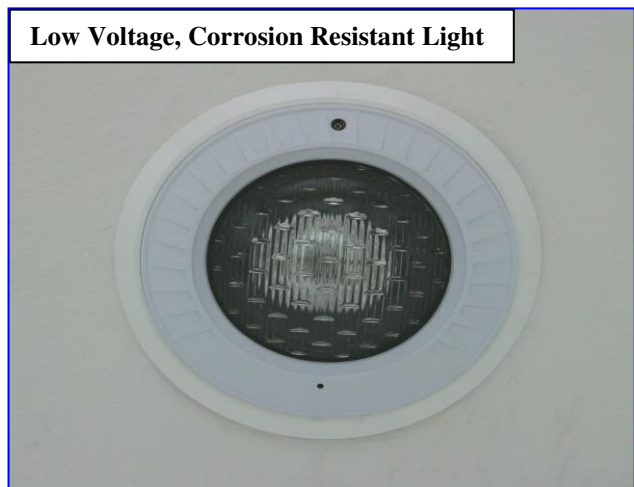
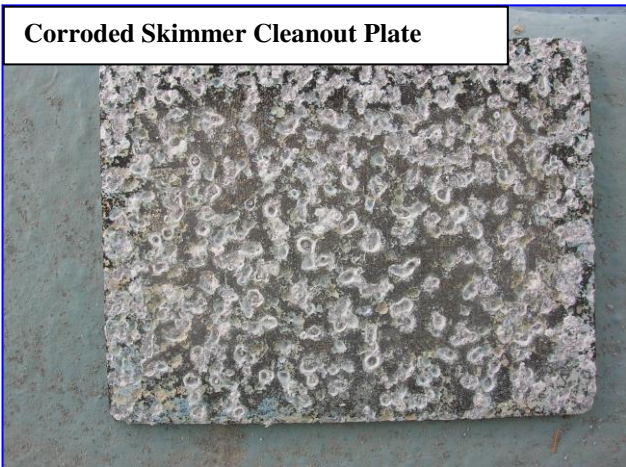
ladders were replaced by non-conductive, reinforced vinyl ladders, the existing metal lights were replaced by low voltage, plastic bodied lights, and the entire pool surface was sealed with the non-conducting INTER-GLASS® Reinforced Composite System.



SAMPLE PICTORIAL SEQUENCE ON BACK OF THIS PAGE

METROPOLITAN CONDOMINIUMS

KANSAS CITY, MISSOURI



PROJECT SPECIFICATIONS:

TOTAL SQ. FT.: 1,235
POOL SHAPE: L-SHAPED W/ DEEP END
TYPE OF CIRCULATION: ALUMINUM GUTTERS
TYPE OF CONSTRUCTION: ALUMINUM
TYPE OF FINISH AFTER RENOVATION: INTER-GLASS®