



**PROJECT ASSESSMENT**

*“What needed to be done”*

A pool that had originally been built in the 1940’s and had undergone several re-plastering jobs now opted for the more permanent, climate durable INTER-GLASS® System. Staining and algae plagued the pool and porous pool plaster surface. Painted racing lanes and targets that continued to fade and chalk and needed repainting from year to year were now scheduled to be changed to frost-proof tiling.

**RE-SURFACING PLAN**

*“How it was done”*

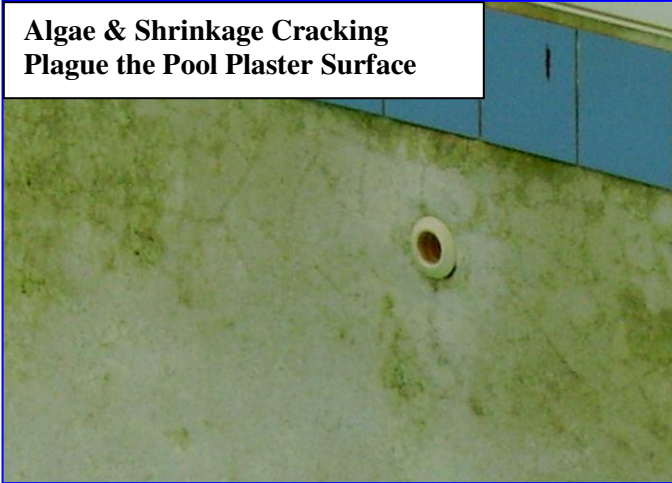
Following preparation and high pressure water-blasting (>5000 psi), a Protective Barrier System was installed over the entire surface of the main and kiddy pools. Frost-proof, non-glazed racing lane tiling were installed

over 8-lanes and the depth transition line. The INTER-GLASS® Reinforced Composite System surface was then installed over both pools.

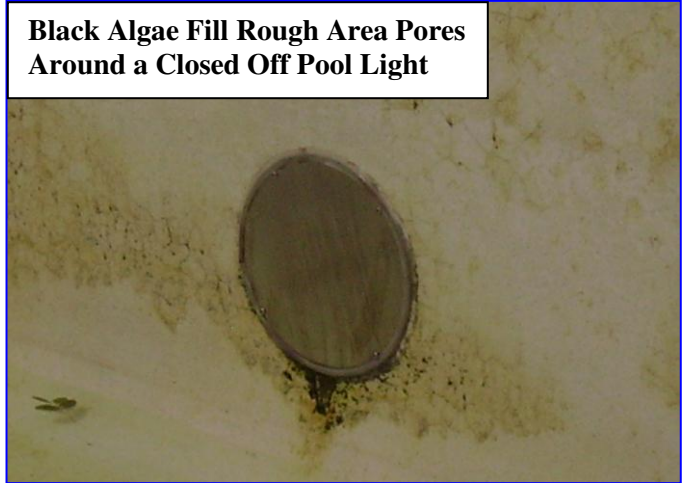


PICTORIAL SEQUENCE FOLLOWS ON BACK OF THIS PAGE

**Algae & Shrinkage Cracking  
Plague the Pool Plaster Surface**



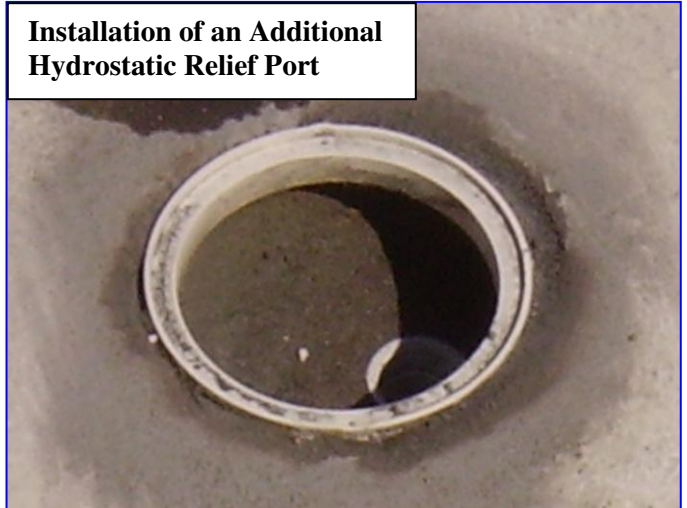
**Black Algae Fill Rough Area Pores  
Around a Closed Off Pool Light**



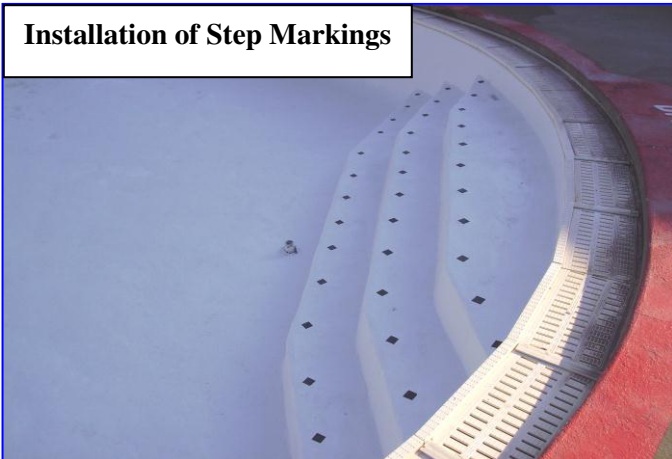
**Water Blasting & Stain Removal Underway**



**Installation of an Additional  
Hydrostatic Relief Port**



**Installation of Step Markings**



**Finished Kiddy Pool**



**PROJECT SPECIFICATIONS:**

TOTAL SQ. FT.:	10,154
POOL SHAPE:	LARGE OVAL, 13FT. DEEP
TYPE OF CIRCULATION:	GRATE COVERED CONCRETE GUTTERS
TYPE OF CONSTRUCTION:	POURED & FORMED CONCRETE
TYPE OF FINISH AFTER RENOVATION:	INTER-GLASS®