

**PROJECT HISTORY – ADDITION OF 0-DEPTH ENTRY & REMODEL – BUILT 1967**  
**CITY OF STANBERRY** **COMPLETION: 2012**  
**STANBERRY, MISSOURI**



**PROJECT ASSESSMENT**

*“What needed to be done”*

Many older commercial swimming pools remain structurally sound even after decades of use and abuse. These older pools rarely have amenities such as slides or features of newly built Aquatic-type centers, ones that their swimmers and patrons desire, but that many municipalities simply cannot afford. They look to a major renovation as an alternative. Successful remodels and upgrades demand Engineers and Contractors with an understanding of original construction theories, how to assess and repair damage, experience in Aquatic renovation, and a thorough knowledge of current pool Safety and Code requirements.

**RENOVATION PLAN**

*“How it was done”*

Before the Project began, a non-intrusive Schmidt Hammer test was done on the entire pool shell to test the concrete’s Compressive Strength. Additional follow-up testing was done by taking core samples. Expansion joint areas posed a major re-building challenge. The existing gutter system was wrought with concrete degradation, leakage and freeze / thaw damage. Cutting off the gutter exposed the use of shrinkage aggregates in the original concrete mix and cracking it creates. The entire 80’ shallow end wall was removed as was the entire pool decking area.

Engineers specified jointing requirements for adding the new 45’ long Zero-Depth Entry area. Both sub-surface and deck drains were planned and subsequently added with the new deck. Concrete densifiers were added to the concrete walls. A new perimeter Stainless Steel Gutter System was installed. New dual fiberglass filters and recirculation pumps were added along with a new pool slide. Finally, the entire pool’s interior surface was finished with the INTER-GLASS® Reinforced Polymeric System.

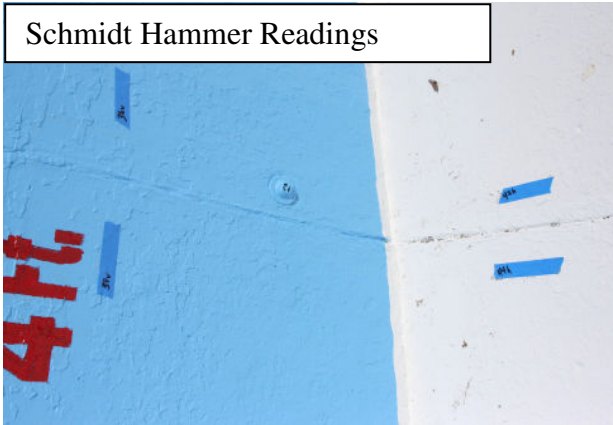


SAMPLE PICTORIAL SEQUENCE OF RENOVATION ON BACK OF THIS PAGE

**CITY OF STANBERRY**  
**STANBERRY, MISSOURI**

---

Schmidt Hammer Readings



Deteriorated Expansion Joint



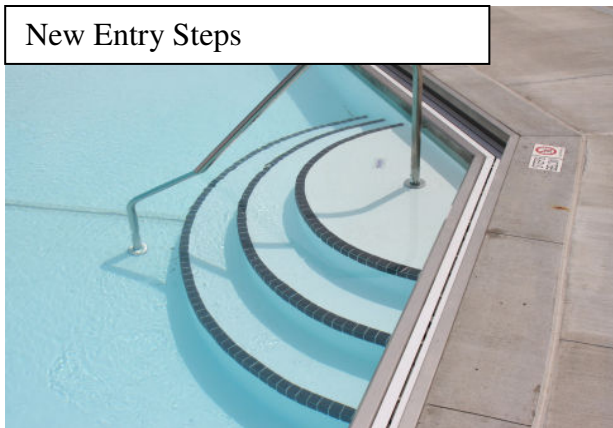
Shallow Wall Removed, Forming



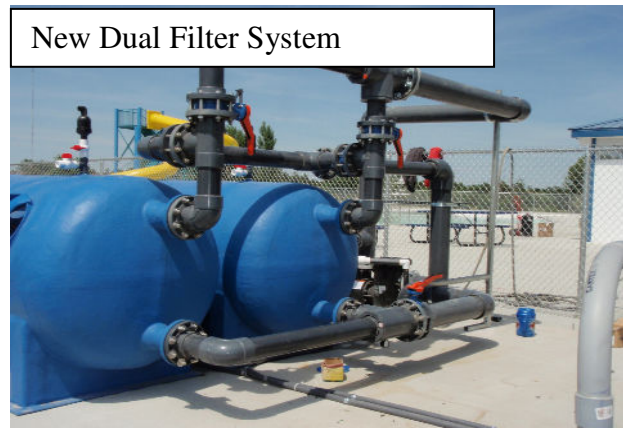
Gutter Installation Underway



New Entry Steps



New Dual Filter System



**PROJECT SPECIFICATIONS:**

TOTAL SQ. FT.:	6,875 w / ADDED WALK-IN
POOL SHAPE:	MODIFIED / FREEFORM
TYPE OF CIRCULATION:	S/S GUTTER SYSTEM
TYPE OF CONSTRUCTION:	POURED & FORMED
TYPE OF INTERIOR FINISH:	INTER-GLASS®
ENGINEERING:	NORTON & SCHMIDT