

PROJECT HISTORY

LONGVIEW COMMUNITY COLLEGE

LEE'S SUMMIT, MISSOURI

Completion : 2012



Before

Project Assessment

"What needed to be done"

In 2006, because of a difference of \$1,018 in Bids, Longview Community College installed a cover-up PVC Membrane instead of a fully-bonded re-surfacing system on their competition swimming pool. Within 4-months of installation the Membrane lifted in the 13FT depth area requiring closure of the pool, total draining and repair. Since this 2006 installation, numerous repairs and patches have been done on the Membrane to the point that the pool interior began to look hideous. Patches and repairs were only one part of the problem. A pump was required to remove water accumulating under the Membrane along with a 'trip-hazard' hose running across the deck to move this water out to a drain, many wrinkles, torn and dismantled weld seams and stains that gave the pool an unsightly appearance.

Renovation Plan

"How it was done"

The plan began with complete removal of the Membrane and the deteriorated, mold filled, partially glued-on felt padding below. The Membrane material was manually cut and removed from the pool, as was an affixed metal plate anchored into the concrete pool wall directly below the perimeter gutter system. What degraded and deteriorated felt material could not be manually removed was blown off with a 40,000 psi (UHP) Hydro-blaster. This removal unit removed all remaining felt, glues, molds, contaminates, as well as undetected, delaminated pool plaster trapped between the pool plastered surface of the

pool and the Membrane. Concrete repair materials were used to fill portions of the uneven, popped-off surface and then primed to avoid the required lengthy concrete cure time. Racing lane courses ran in both directions through the pool. Anchoring pins used in various Membrane repairs damaged much of the original racing lane tiling. After surface preparation was completed and prior to re-surfacing with the INTER-GLASS® Reinforced Polymeric System, new racing lane tiling was installed throughout the pool.



Renovation Result

Sample Pictorial Sequence on Back of this Page

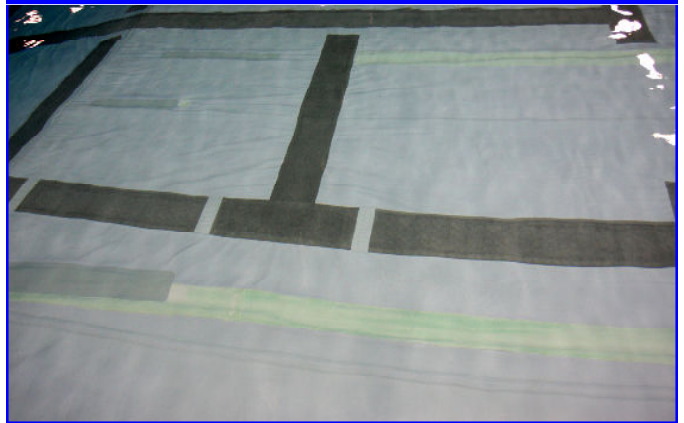
LONGVIEW COMMUNITY COLLEGE

LEE'S SUMMIT, MISSOURI

PVC Membrane Wrinkles



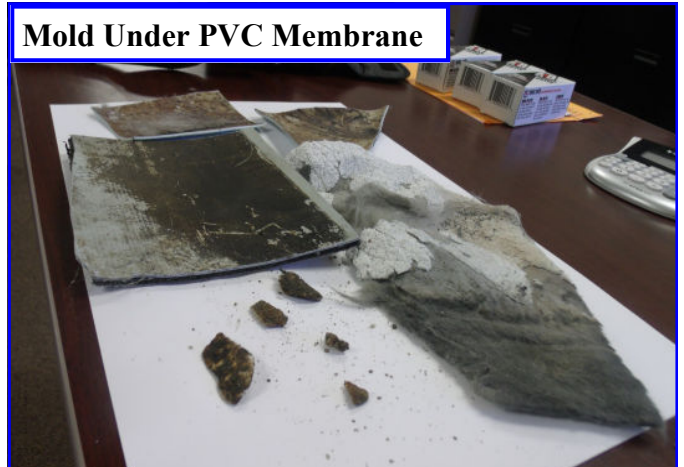
Outline of Hose Used to Remove Water under PVC



PVC Membrane Patch



Mold Under PVC Membrane



Pool Interior Patching After Removal



PVC Membrane and Felt Material Removal



PROJECT SPECIFICATIONS:

TOTAL SQ. FT.:	9,870
POOL SHAPE:	MODIFIED RECTANGLES
TYPE OF CIRCULATION:	ALUMINUM GUTTERS
TYPE OF CONSTRUCTION:	SHOTCRETE
TYPE OF FINISH AFTER RENOVATION:	INTER-GLASS®