

PROJECT HISTORY

SAVIOR PASTORAL CENTER – ROMAN CATHOLIC ARCHDIOCESE OF KANSAS CITY, KANSAS

COMPLETION: 2016

Before



PROJECT ASSESSMENT

“What needed to be done”

Originally constructed in the late 1950's, the Savior Pastoral swimming pool had a fully (very dull) green tiled pool interior and brown colored slurred decking that gave the entire setting a dark, dank, unappealing look.

Recirculation lines constructed out of steel were so badly corroded that water could not flow through the lines. Both the deck drains and gutter suction lines had separated from piping allowing water to simply pour out of the pool onto the corridors and walkways below the pool. Water leaching through the concrete walls left unsightly calcium deposits and leakage on the exterior corridor walls, and a single main drain sump had to be updated to meet current VGB Code.

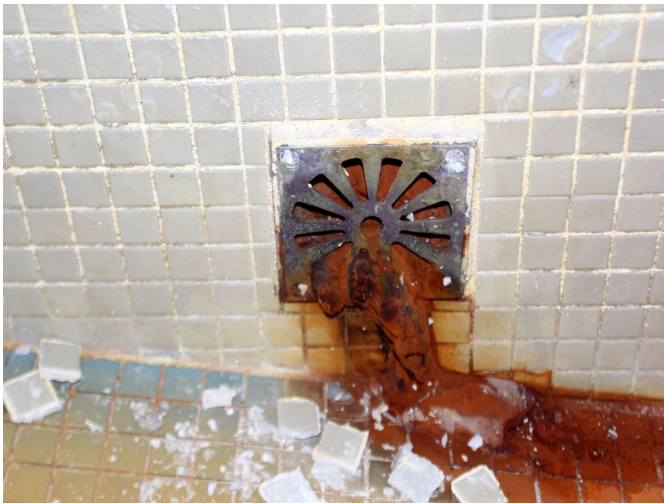
RENOVATION PLAN

“How it was done”

The costs of completely removing the existing tiling and re-surfacing with new, brighter tile was cost prohibitive. And given the condition of the cracked concrete walls, re-surfacing with a Cement-based material was not practical. A white INTER-GLASS® interior, accented with black racing lanes and targets and light beige decking served to seal surfaces from water loss and brighten the room. Old steel plumbing lines were manually removed from the structure and replaced with SCH 40 PVC. The concrete basin was cut and excavated for a new unblockable VGB Compliant main drain system.

While most of the elevated existing steel plumbing lines seemed accessible, cutting and removal had to be done on scaffolding from the corridors surrounding the pool. New recirculation lines were cored through the concrete walls. Old steel lines were sealed and covered. After the existing tile was scarified, a Protective Barrier and multiaxial fabrics were installed, followed by new racing lanes and the INTER-GLASS® Reinforced Polymeric System. A new 15hp pool pump and automatic water leveler completed the pool part of the Project.





Return Line full of Rust



Corroded, Rust filled, Manganese covered return line



Condition of Strainer Before Renovation



Calcium leaching from wall & around steel piping



Thin Deck Membrane in process of Removal



New PVC Recirculation Lines in Process of Installation

PROJECT SPECIFICATIONS:

Total Sq. Ft.:

4,675

Pool Shape:

Rectangle w/Deep End

Type of Circulation:

Gutters, Main Drain, Return Lines

Type of Construction:

Formed & Poured Concrete, Fully Tiled

TYPE OF NEW INTERIOR FINISH

INTER-GLASS®