

PROJECT HISTORY

TOWN OF RIDGEFIELD

RIDGEFIELD, CONNECTICUT

COMPLETION: 2010



PROJECT ASSESSMENT

“What needed to be done”

Pool chemicals and heated water had taken their toll on the cement-based surface of the indoor community swimming pool of the town of Ridgefield, Connecticut. Swimmers were tolerating a stained, rough and deteriorating pool surface. Numerous pop-offs had occurred on the pool with visible patches everywhere. A patched structure crack was visible across the shallow end of the pool.

RENOVATION PLAN

“How it was done”

Members of the Town of Ridgefield Council investigated options for resurfacing their aging, previously re-plastered swimming pool. The goal was to identify the longest-lasting, best process for their heated, indoor pool. They visited similar projects within their vicinity and as far away as Pennsylvania and Ohio in order to personally see installations in use.

After the investigation was complete, the Building Maintenance Manager of the Town of Ridgefield submitted a recommendation to the Town Council. The recommendation was for the INTER-GLASS® Reinforced Composite System. During a large public hearing and vote, the Town Council unanimously accepted the recommendation.

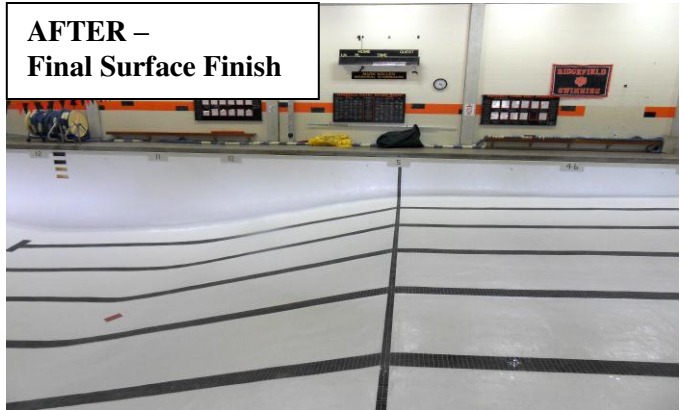
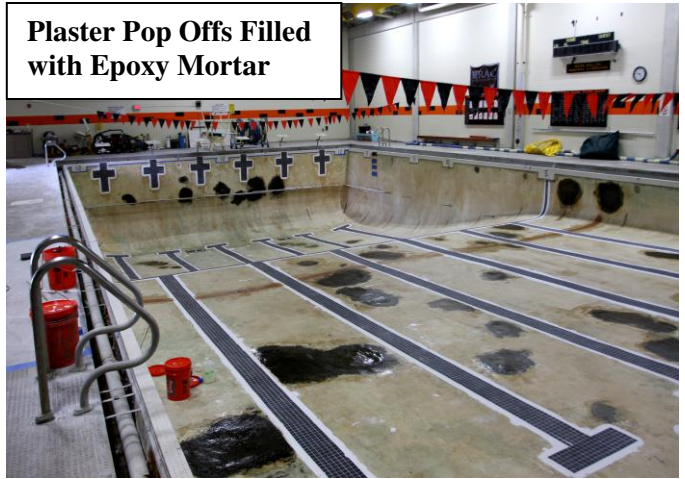
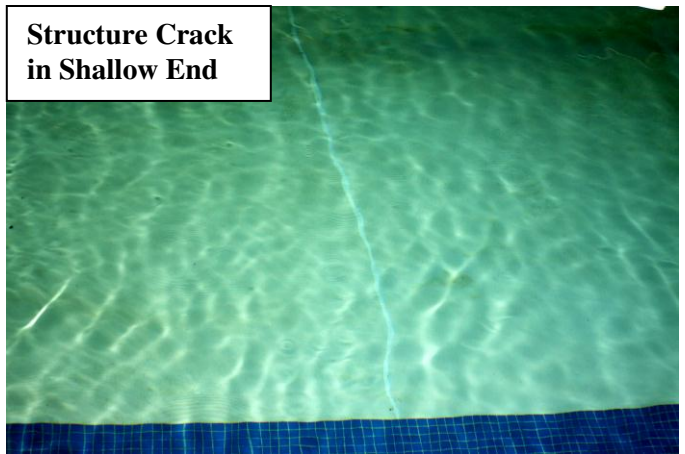
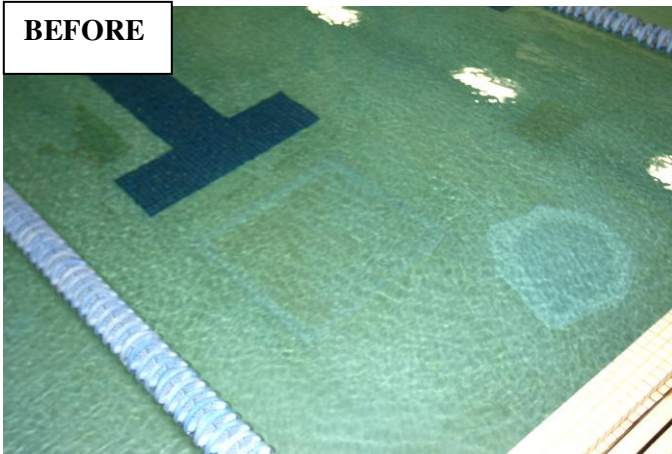
The community began a vigorous fund-raising effort. Within a year the funding was acquired through the joint efforts of the local community and the Town Council. The project was publicly bid. The project included the INTER-GLASS® Reinforced Composite System for the pool interior, and new ceramic tile racing lanes and targets. Mid-America Pool Renovation, Inc. was awarded the work.

Mid-America dedicated two experienced crews to the project, and the contracted work was finished on schedule, in just one week. When complete, the pool performed better and looked more beautiful than new.



SAMPLE PICTORIAL SEQUENCE ON BACK OF THIS PAGE

**TOWN OF RIDGEFIELD
RIDGEFIELD, CONNECTICUT**



PROJECT SPECIFICATIONS:

TOTAL SQ. FT.:	5,430
POOL SHAPE:	RECTANGULAR WITH RACING LANES
TYPE OF CIRCULATION:	CONCRETE GUTTERS WITH GRATES
TYPE OF CONSTRUCTION:	SHOT-CRETE
TYPE OF INTERIOR FINISH:	INTER-GLASS® AFTER RE-SURFACING